

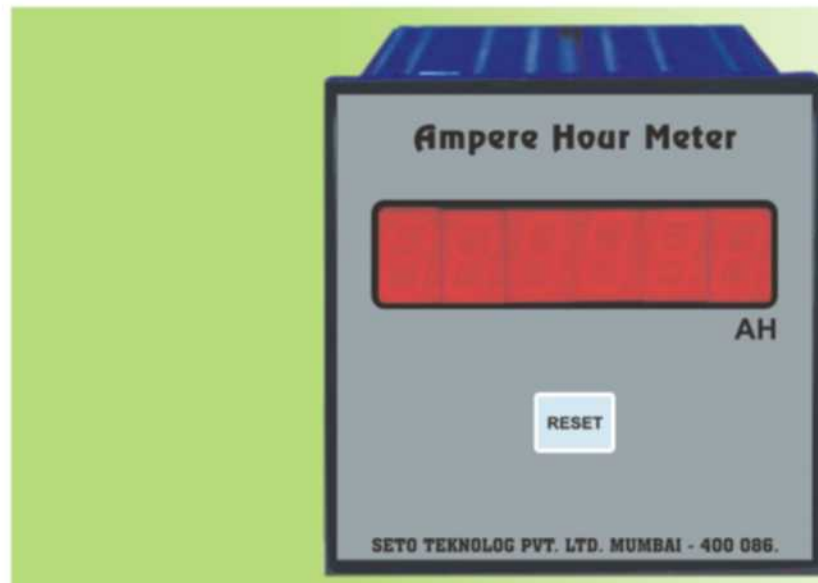
Ampere Hour Meter is an instrument that monitors electric charge flow. The indication is the product of current (in amperes) and time (in hours). The Current is sensed with the help of an external shunt. The drop across the shunt is fed to the meter.

Features

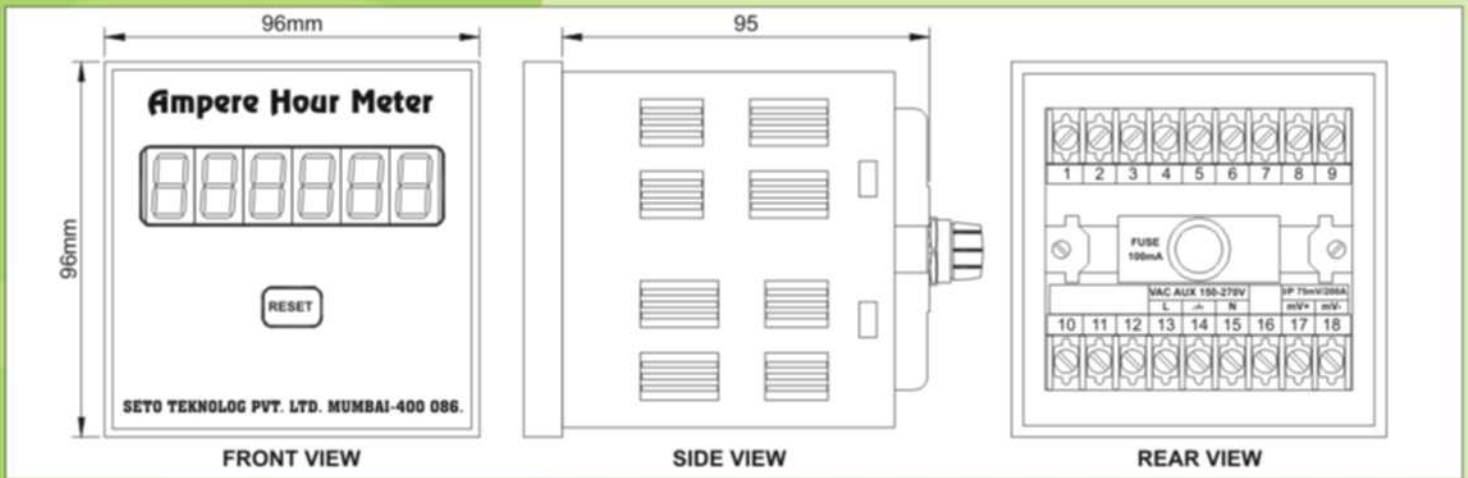
- 6-digit display to indicate AH values from 0 to 9999.99.
- Facility to set the Shunt constant values (Internal).
- A facility to store the AH, in case of power fail.
- Resetting AH.

Specifications

- Aux Supply: 150V to 270 V AC.
- Power Consumption: 5 VA (max).
- Shunt Ratings: 75 mV, 200Amp
- Push Buttons: Reset.
- Unidirectional Counting.
- Power Supply fail detection.
- Dimensions: 96 x 96 x 95 mm Front panel mounting.
- Panel Cutout: 92 x 92 mm.



Dimensional Diagram



Basic Operation

The meter accumulates the Ampere Hour and displays it on the 6-digit 7-seg Display.

Counting will Start from the AH value which had been stored earlier. If the values stored in EEPROM are corrupted then counting will start from 0.

If Reset pushbutton is kept pressed for more than 4 seconds AH is reset and counting will start from 0.

If the Amp-Hour max limit i.e. 9999.99 is reached the display will be start blinking and counting will stop. Counting will again start from 0 after pressing the reset key.

Other Products

- Supervisory Remote Control & Data Acquisition Systems - Total turnkey.
- Remote terminal Units (RTU).
- Micro RTU.
- Microprocessor Based Equipments _ MCB Monitors, Beetle Monitors, Temperature Scanner etc.
- Custom Built Electronic Equipments.
- Digital A.C. Ammeter.
- Digital A.C. Voltmeter.
- Digital Volt, Amp, & Watt Meter - class 0.5/0.2.
- Position Indicating Transducers.
- Static Energy Meters.
- Digital Flow Meters.
- Digital Power Monitor Cum Controllers.



SETO TEKNOLOG PRIVATE LIMITED

406, Hill View Industrial Estate, Amrut Nagar, Ghatkopar (W), Mumbai - 400 086. (INDIA)
Tel.: 91-22-2500 7272 / 5575 1888. Telefax : 91-22-2500 7497
E-mail : seto@vsnl.com , Website : www.seto.co.in, www.setoteknolog.com